

## Monthly Video Workshop Potluck

Open to anyone interested in pottery, wanting to improve their skills, seeing new techniques, or just getting together with other potters for an evening of fun and pottery-talk. This year we will view Robin Hopper's series followed by the Steve Jepson presentations. Video Workshops are held on Saturday evenings from 6:00 until 9:00 pm once or twice a month. Special slide presentations from workshop presenters are also open to interested individuals.

Video workshops are free. All that we ask is that you bring a food item to share, tea and coffee provided, and expect to have a good time.

### 2012 Schedule\*

January 21st	July 14 & 28th
February 25th	August 11th
March 10th	September 8th
April 14th	October 13th
May 12 & 26th	November-Dark
June 9th	December-Dark

\*Dates subject to change, check Web Site



**Student Rates:** Student rates may be available for High School, College, and University students depending on the workshop leader. Call to find out.

**Lunch Policy:** Due to the difficulty of meeting all nutritional needs, please bring your own lunch. Coffee, tea, and snacks are provided.

**Registration Deadlines and Refunds:** Full refunds are granted until the registration deadline. \$50 of the registration fee is withheld after the deadline but before the workshop date. After the first day of the workshop, no refunds are granted.

**Workshop Cancellations:** If there is insufficient enrollment, workshops will be cancelled with a full refund.

### OTHER EVENTS:

- Empty Bowls October 7th 2012
- Frederick Festival for the Arts Seconds Sale June 2nd, 3rd 2012
- Table-Scapes September 2012
- Santa's Workshop December 9th 2012



## The Little Pottery Shop Center for Clay Art and Design



## 2012 Workshop Schedule



2011 Raku Workshop presented by Denise Joyle

## To Register for Workshops

Call: 301-620-7501

E-mail: [tmpottery@aol.com](mailto:tmpottery@aol.com)

Register on-line at: <http://tmpottery.net>

**Location: The Little Pottery Shop**  
Shab Row—Frederick  
117 North East St.  
Frederick, MD 21701

## Linda Arbuckle and Tony Clennell

Two extremely talented and sought after workshop clay artists are presenting at The Little Pottery Shop for Clay Art and Design this year. Both have recently published DVD's and we are fortunate to have them on our schedule.



### Linda Arbuckle

Linda Arbuckle's work in majolica-glazed earthen ware has been recognized internationally and has earned her a fellowship from the National Endowment for the Arts. Ar-

buckle is known for the luscious majolica surfaces on functional ceramic wares. Using color and floral motifs, she carries on the ancient tradition of painting on clay, bringing brightness and life to terra-cotta.



July 14th and 15th 9:00 to 4:00

\$275 includes both days. Enrollment is limited to 15 participants on Sunday for those wishing to decorate their own bisqued pots, so reserve your space early.

### Monthly Workshop Schedule

In addition to Tony and Linda, local, talented clay artists are presenting. Come for the fun!

January 27th, 28th, 29th 9:00 to 4:00

**Kevin Crowe** Large Forms \$385

February 18th 6:00 to 9:00 pm

**"Ghosts"** Throw with your Valentine

\$95 per couple

February 25th, 26th 9:00 to 4:00

**Gary Stevenson** Basics Wildlife and Advanced Small Animals \$150 each day

March 30th, 31st, April 1st All Day

**Baltimore Clayworks Wood Fire** \$125

Plus clay, which can be purchased separately

April 28th, 29th 9:00 to 4:00

**Catherine White** Altered Forms \$275

Tired of round? Learn to make great altered forms

May 18th, 7:00 to 9:00 19th, 20th 9:00 to 4:00

**Tony Clennell** Handles & Throwing \$275

June 30th 10:00

**Patsy Ransom** Japanese Style Flower Arranging Materials fee to be determined.

July 13th, 14th 9:00 to 4:00

**Linda Arbuckle** Majolica Decoration \$275

September 22nd 9:00 to 3:00

**Tim Sherman** LPSCCAD RAKU Fire \$225

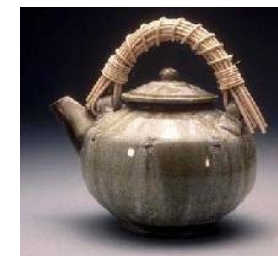
Limit 6 pots per person, Glaze the week prior.

### Tony Clennell

Tony teaches the fine points of making great pots including throwing techniques, surface embellish-

ments, and the little details that make all the difference. Rest up for the ride. Tony is an entertainer, a philosopher and never shy with his opinion. Tony also writes for "Clay Times". This is going to be a fun one!

Workshop participants learn Tony's sectional throwing method for making pots in pieces making it easier to handle larger amounts of clay. The pottery demonstrations include large jugs, casseroles, vases, teapots, cups, bowls, and platters. Handles, lugs, altering, cutting, and surface embellishment with slips is also covered.



May 19th and 20th 9:00 to 4:00

\$275 includes both days and slide presentation open to anyone interested. Workshop Includes slides and demonstrations with throwing on Saturday and assembly on Sunday.

Check Web Site or call for details of the Monthly Workshop Presentations